



Nelson & District
CREDIT UNION
Logically. Locally.

Columbia Basin Trust

Recreation Sites and Trails BC

Heritage BC

CENTRAL KOOTENAY NATIONAL DISTRICT

TRANS CANADA TRAIL SOUTHERN TRANSCANADIAN

Trail courtesy – be responsible

The land and wildlife – leave no trace

Other trail users – slow down and communicate when passing

Respect

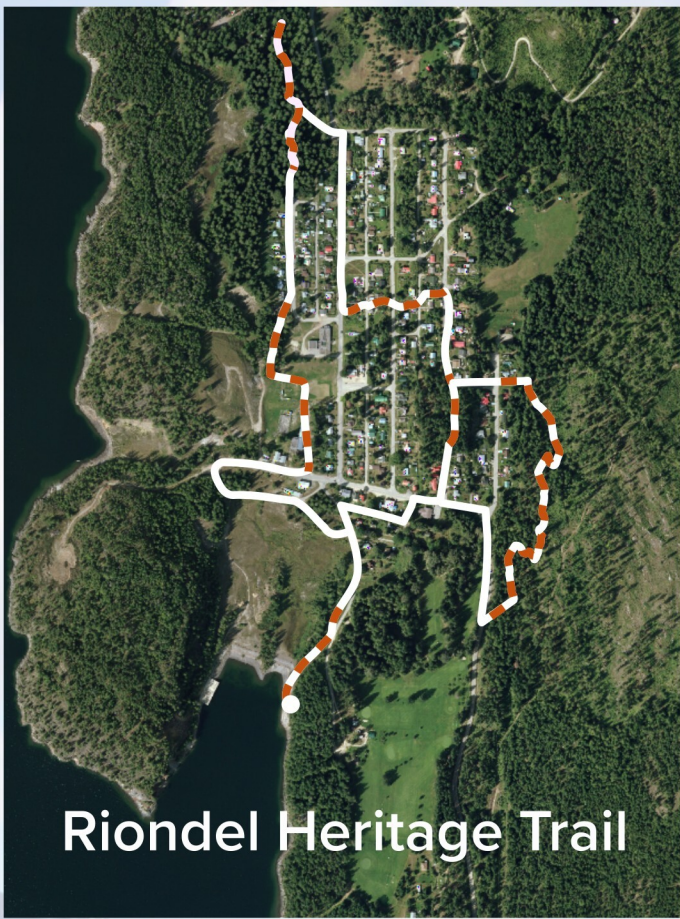
SHARE THE TRAIL

Trail Map

Crawford Peninsula, Pilot Peninsula
Crawford Creek Regional Park,
Historic Riondel & Trans Canada Trail

East Shore of Kootenay Lake
British Columbia Canada

ESTBA east shore trail & bike association
estba.ca



Riondel Heritage Trail

Riondel Heritage Trail

This non-motorized trail offers users a unique introspective into the historic community of Riondel. The route connects segments of new forest trails with parks, alleys and other green spaces. The trail route offers many natural and educational experiences as it travels through old growth forests, local parks and many views of the historic Bluebell Mine workings. The trail is complete with benches, storyboards and interpretive signage

Trans Canada Trail

The East Shore segment of the Trans Canada Trail begins in Kootenay Bay. The traveler, after crossing on the Kootenay Lake Ferry, will follow HWY 3A through the Artisan community of Crawford Bay. Continuing south for 1km, the authorized off-highway route begins at Weasel Creek FSR. As the trail reaches the first private property in Gray Creek, it descends back to the highway past a number of inviting public beach accesses and the Gray Creek Store. Here you can get up-to-date information about the Gray Creek Pass FSR that goes to Kimberley.

Kokanee Springs Loops and Bridges Trail

At the resort's primary entrance there is parking right after the bridge. This loop is best enjoyed in a counter-clockwise direction. Nice, wide, undulating trails offer a lovely family forest adventure. Interpretive plaques offer information on local flora and fauna.

Hiking Trails on the Crawford and Pilot Peninsulas

This map divides the peninsula trails into non-motorized multi-use trails and designated hiking routes. The hiking trails are in the Pilot Bay Provincial Park as well as the southern crown land trails that connect to the trail hub. These trails have not been designated for mountain biking due to park regulation, land use changes and general trail design which doesn't make for the best cycling experience. If you find yourself mountain biking on these trails, please be extra considerate with hikers you encounter by dismounting your bike as you pass. Communication is key for a safe passing.

Mountain Biking on the Crawford Peninsula

We are pleased to offer an exciting mountain biking experience on the peninsula's multi-use trail network. There are three ways to access the Crawford Peninsula's multi-use trails. For the best mountain bike experience, we suggest dropping a vehicle in Crawford Bay and taking another high-clearance vehicle up the Pilot Point forest service road (FSR) either to the North Spur Rd (shorter ride) or 3.5 km to the trail hub. Alternately you can access the network from HWY 3a beside the highways yard along the powerlines.

Basic wilderness skills are required.

There are safety hazards such as standing dead trees and drop-offs. Use caution, especially when with young children. Bears and cougars are in the area. Be aware of your surroundings and make some noise in the way of conversation, bells, or occasional calls.

- Bring extra water as there are limited opportunities to refill bottles
- Bring a first aid kit
- Mountain bikers should have tools and an extra tube
- Be sure to tell someone where you are going and when you plan to return
- Cell phone service is not available in all locations.

If you find a trail not described here, it is likely headed towards private property. Please stay on the trails listed and respect landowners.

Crawford Creek Regional Park

This 70 hectare regional park consists of a significant wetland, cottonwood forest, easy hiking and mountain biking trails as well as two gorgeous public beaches. The wetland is well known as a bird viewing area. The Crawford Bay Wetland is an important wildlife breeding site for ground nesting birds from early April to mid-July. During this time please leash your dogs. Dogs running free can disturb breeding wildlife and their young.

Waterline Trail (below)

In 1905, the Bluebell lead/silver mine had been resurrected by the Canadian Metal Company. In order to develop the mine, a water pipeline was built to generate power to operate the mill and pumps. The 4km trail and wood stave waterline was built by mineworkers under the direction of Count Edouard Riondel, president of the French-owned company.

Points of interest on the Waterline Trail

The intake at the old dam on Tam O'Shanter Creek, wooden cribbing, rock walls, circular flanges which were rock-bolted to the canyon walls and held the suspended pipeline, and the remains of an old cedar log cabin called "Tam O'Shanter Hotel".

There are a few ways to experience this trail.

Drive/ride up the Tam O'Shanter Forest Service Road 2.6 km to access the top canyon portion (Canyon segment not designated for MTB).

Descend on the trail back to Riondel from the 2.6km marker. The complete trail can be accessed from Riondel Rd North. After exploring the canyon by foot, you can bike down the whole trail to the Riondel North Rd Trailhead.

Besides the Canyon Segment (hiking only), the trail is a multi use non-motorized trail. Trail courtesy in the form of communication and slowing down when passing other trail users is crucial. The Riondel North Rd is in a residential neighborhood. Please respect our trail neighbors. #leavenotrace principals apply.



SUMMIT CYCLES
& SPORTS

Bicycle Sales & Service
Outdoor Gear for All Seasons

1021 Canyon Street, Creston
summitcycles.ca (250) 428-2630

@summitcyclesbc



Join Us
On The Patio!
Open Year
Round!

16103 Hwy, 3A, Crawford Bay www.hubeatery.ca



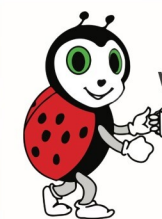
16961 Pilot Bay Road
Kootenay Bay
www.soulsparadise.ca
Text Valéry: 250-201-9441

Longterm Pad Rental
Seasonal sites
Short term sites
Fully Equipped Camper
Chalets
Sandy Beach
Doggy Beach
Marina
Sani Station
Showers/Laundry
Music Events
Massage Therapy
Activities



One Stop Shopping
Full Grocery, Gas, Liquor, and more

16050 Highway 3A, Crawford Bay, BC
250-227-9322
cbm@crawfordbaymarket.ca



Ladybug Coffee

Start your adventure with a
World Famous Breakfast Sandwich
and a cup of Oso Negro Coffee.

Open everyday 6:30am – 3pm
Located at the ferry landing in Kootenay Bay

Kootenay Lake
Chamber of Commerce



info@kootenaylake.bc.ca
www.kootenaylake.bc.ca

70 km north of Creston
on the east shore of
beautiful Kootenay Lake

Kokanee Chalets

CABINS, RV PARK & CAMPGROUND

Cozy 3 bedroom chalets & motel rooms
Large RV & camping sites nestled in a cedar forest
50 acres with ponds, nature walks and sandy beaches
Across from Kokanee Springs Golf Course - Golf packages available.

info@kokaneechalets.com
www.kokaneechalets.com **1-800-448-9292**

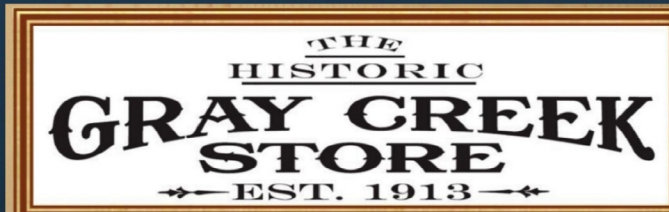


Groceries, Liquor, Gas, Post,
Campground, Marina

14729 Hwy 3A, Gray Creek, BC
www.kootenaylakeview.com
1-877-227-9311



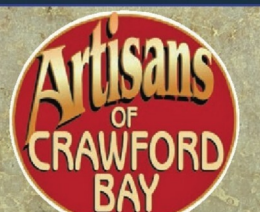
hike • bike • walk • stroll
enjoy all the east shore has to offer



Old-Fashioned General Store

Camping, and Marine Supplies
Yard and Garden Supplies
Woodstoves, Lumber and More!

Only 5 Minutes Down the Road from Crawford Bay
250-227-9315 graycreekstore.com



Pottery • Handweaving
Jewelry • Blacksmithing
Broommaking • Clay Art
Copper Enameling
...and more

80 km north of Creston,
7km from the ferry

artisansofcrawfordbay.com